

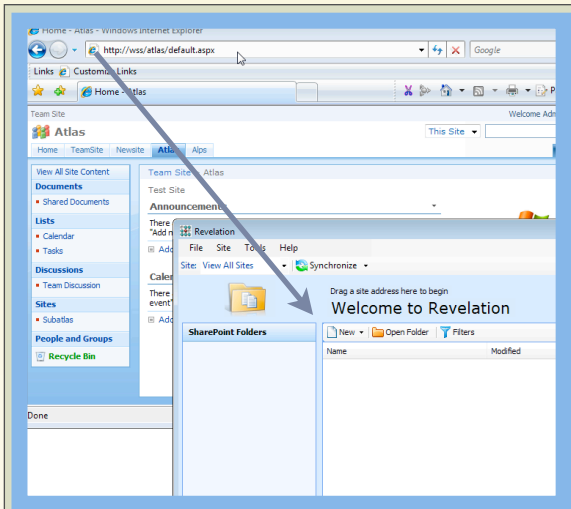
# SharePoint Offline Client QuickStart

## ADD SHAREPOINT SITES INTO THE REVELATION OFFLINE CLIENT

Synchronising with Revelation is a simple process. Just drag and drop the SharePoint site onto Revelation and then tell the software which folders you want to keep synchronised. Either click the top folder level to sync the whole site or select the folders.

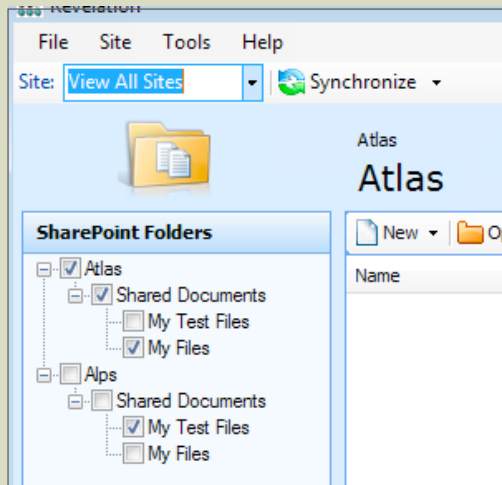
## APPLICATION INTERFACE

From the application interface you have complete selective control over documents you wish to manage whether they are on SharePoint or held locally on your computer.



### 1. DRAG THE SITE INTO REVELATION

Just drag & drop the SharePoint Site favicon / URL onto Revelation top banner. - Click Sync

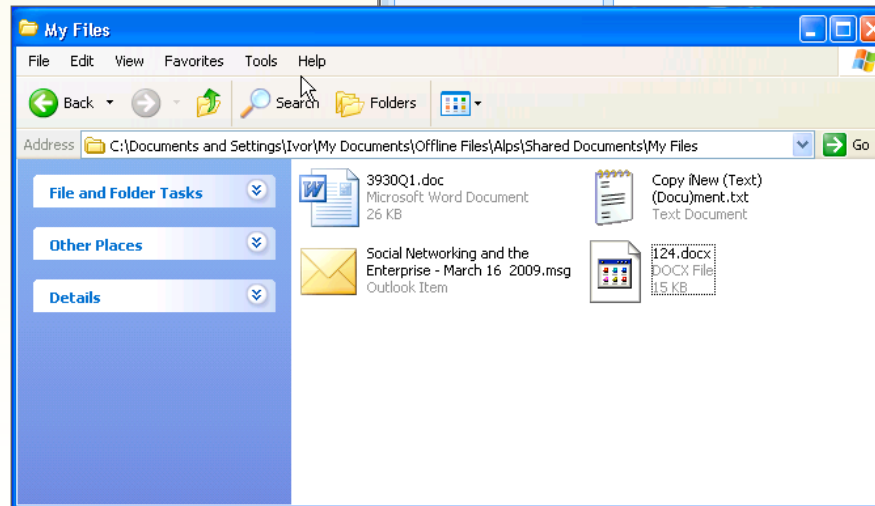
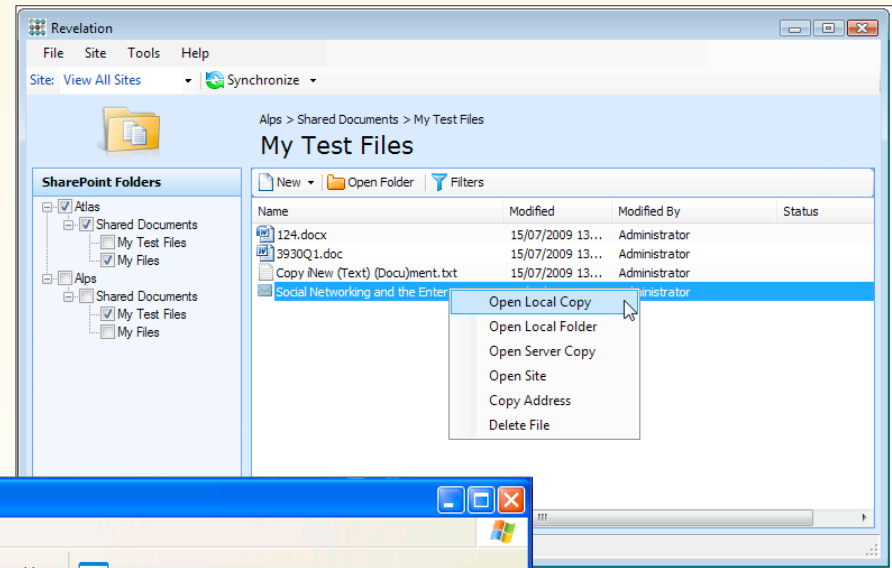


### 2. CHOOSE WHAT TO SYNCHRONISE

The site structure is synchronised. Now choose which folders you would like to cache locally. Click Sync again and they will be downloaded from SharePoint.

## WINDOWS INTERFACE

The client automatically synchronises the SharePoint files you have selected and presents them in a standard Microsoft Windows folder structure that mirrors the SharePoint site. Any new files added or updated will appear here. Files updated or added here will update into SharePoint.



## FILE MANAGEMENT

Revelation will automatically keep track of updates and changes in the local file system.

Revelation will automatically synchronise changes made on the SharePoint server.

Digilink Revelation™ 3.1